



JIPE is the first leading integrated estate in Indonesia with total area of 3,000 hectares, consisting of industrial estate with logistics center and bonded facilities, multipurpose port for international and inter-islands connectivity, supported by commercial and residential township. Located in Gresik, East Java Province, JIPE will be the most strategic industrial HUB in Indonesia and Asia Pacific.

JIPE Industrial Estate

Our Ultimate Facilities

- 100 year Flood Free Estate, designed by Nippon Koei, Japanese master planner
- Independent power plant (up to 1,200 MW), first phase 23 MW in operation since Q4/2017
- Independent water treatment plant and waste water management, first phase 2,500 M3/day ready in semester 1/2019
- Natural gas availability and independent pipeline system
- Fiber optic telecommunication system
- Logistics connectivity for international and domestic : Deep Sea Port (-16LWS), direct toll road connection (ready in 2020), and dry port with double track railways (ready in 2023) for goods transfer within Java Island
- Lots for industry and logistic park
- Office building & commercial park
- Standard factory building and warehouse for sale and rental
- Bonded facilities : Bonded Area, Bonded Warehouse and Bonded Logistic Center

Synergy For Your Sustainable Investment

JIPE industrial estate is set to be the most advanced, modern, and sustainable industrial estate in East Java. Occupying an area of 1,761 hectares, industrial clustering system is enhanced to ensure tenants operation. Currently developed clusters:



Clean Block Cluster

Dedicated for food & pharmaceutical industries



Liquid Block Cluster (in 2019)

Dedicated for liquid based industries



Smelter Block Cluster



Multipurpose Block Cluster

Dedicated for many sectors of industries with considering the synergism & sustainability

New Year Greetings



Bambang Soetiono
President Director

“
I would hope that we all demonstrate our confidence in looking to the future, work together toward a harmonious life.

“

Dear Colleagues and Tenants,

I am pleased to express the warm wishes I have for each and everyone of you, at the beginning of 2019. In the process of economic recovery, where democratic agenda is coming soon, I would hope that we all demonstrate our confidence in looking to the future, work together toward a harmonious life.

JIIPE as one of Indonesian National Strategic Projects is moving forward to further development stage, focusing on utility projects completion and infrastructure extension. I express my gratitude to our stakeholders, government institutions, tenants, investors and partners for a great support, trust and cooperation.

I wish you all success, health, peace and serenity. Happy New Year!

Dear Tenants, Partners and Colleagues,

A very happy new year to all of you!

It has been my greatest pleasure to work together with everyone of you, collaborate intensely in your investment projects, and support you in growing your business in Indonesia.

The management of PT Berkah Kawasan Manyar Sejahtera as JIPE industrial estate developer has been relocated to Gresik in order to give you a faster and better service. We are currently finalizing completion of infrastructure project and utility connection in Clean Block area, where Food & Beverage,

Pharmaceuticals and FMCG sectors are invited. In 2019 we will open our Second Multipurpose Block and Liquid Block to accommodate incoming industrial demands and bring more synergy to the investor composition in JIPE.

Thanking you for your continuous trust and cooperative support, I wish you all the best, a prosperous year of 2019.

*Warmest Regards,
Sianny Indrawati
Marketing & Business Development Director*



Congratulations



Inauguration Ceremony on 17 October 2018

PT Fertilizer Inti Technology (FIT)

*Kawasan Industri JIPE Jl. Raya Manyar KM 11, Blok E Kav. 10, Manyar – Gresik
PIC : Riza Nuryanto 082233689100*

PT Fertilizer Inti Technology (FIT) was established in 2018, which is engaged in the distribution & manufacture of NPK based fertilizer Controlled Released Fertilizer (CRF) SIMPLOT from USA for plantation market and fertilizer technology compaction for retail market (NPK COMPACTION DGW). It also markets high tech fertilizers of NPK Blend + Nutrisphere + Avail as well as micro compound fertilizer type Chelated Lignosulfonate (COPPERZINC) from Brazil.



Inauguration Ceremony on 9 November 2018

PT Adhimix PCI Indonesia (Precast & Concrete)

*Kawasan Industri JIPE Jl. Raya Manyar KM 11, Blok E Kav. 02, Manyar – Gresik
PIC : Yanuar 08157927561*

PT Adhimix Precast Indonesia has grown to become the most reliable sources for national class readymix and precast concrete in Indonesia as one of major suppliers readymix and concrete without affiliated or subsidized by Cement Producer Company or Construction Company.

Previously PT Adhimix Precast Indonesia was a business division of PT Adhi Karya (Persero) Tbk. In year 2002 became PT Adhimix Precast Indonesia, which focusing on ready mix and precast concrete business.



Infrastructure Progress

Ongoing project of 1st stage Water Treatment Plant using Sea Water Reverse Osmosis system with capacity 100m³/hour, ready semester 1/2019.



Ongoing project of 1st stage Waste Water Treatment Plant with capacity 2500m³/day, ready in semester 1/2019.



Delayed completion of road access and utility connection in Clean Block. We apologize for any inconvenience and strive to do our best in finalizing the project in Q1/2019.



Gas pipeline is already connected to First Multipurpose Block and Clean Block, with PGN as the first supplier.

Facility Update

Fire brigade is ready 24 hours/day and 7 days/week

- ▶ Fiber Optic internet connection and telephone lines is ready in Q1/2019
- ▶ Domestic waste management starting soon in Q1/2019



Activity Update

JIPE New Logo

Landor has completed our rebranding process. JIPE will be the leader in integrated estates by creating a vibrant ecosystem and community that enables progress for all.

The brand idea is 'Confident Futures'. Our logo is created from a wordmark and a symbol. The wordmark is bold, solid and simple, communicating the confidence of our business. The symbol of the interconnected rings represents our commitment in creating a truly integrated development that progresses society.



Before

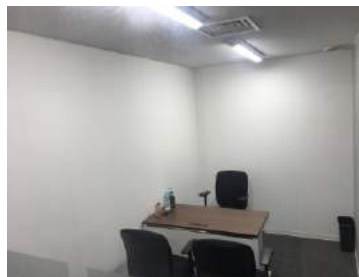


After

Domestic and International Roadshow Programs from Marketing&Business Development Department

JIPE Japan Desk has set up representative office in Tokyo

JIPE工業団地 日本事務所：
〒150-0022 東京都恵比寿南
1-20-6
第21荒井ビル4階
電話：03-6890-2578



JIPE Japan Desk, Chinese Desk, and Regional Desk has been collaborating with Indonesia Investment Coordinating Board (BKPM and IIPC), Embassy and associations in Japan, China, South Korea, Taiwan, Malaysia, Singapore, Hongkong and EU and have received positive feedback from various industrial sectors.

For JIPE tenants, please kindly send updated information for business matching sections to Head of Tenant Relations. For any specific inquiries, please drop your email at marketing@bkmsjiipe.co.id.

HOTLINE: +62 813 8800 0168



K3 from SHE Department

10 January 2019, a socialization program of "Zero Tolerance For Accident" has been conducted for all tenants and contractors in JIPE Industrial Estate to ensure work safety

CSR Program JIPE

Casual sport and free health examination for elders in Manyar Sidorukun area on 28 November 2018.

Special thanks for JIPE tenant sponsorship, PT Fertilizer Inti Technology.



Posyandu for children health in Manyarejo area on 6 December 2018.

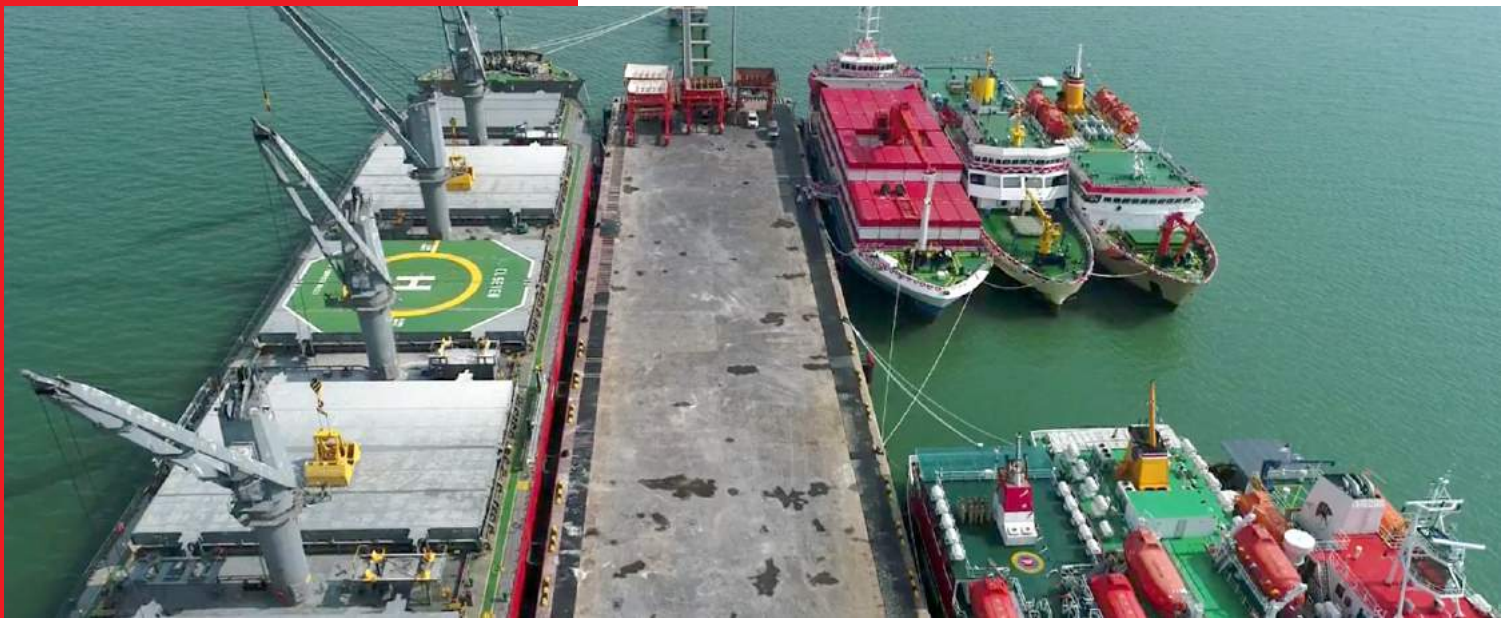
Special thanks for JIPE tenant sponsorship, PT Fertilizer Inti Technology and PT Nippon Indosari Corpindo (Sari Roti).



Posyandu for children health in Manyar Sidomukti area on 10 December 2018. Special thanks for JIPE tenant sponsorship, PT Fertilizer Inti Technology and PT Nippon Indosari Corpindo

Ports Estate

Managed by PT Berlian Manyar Sejahtera (BMS)



Ports Facilities :

- 400 Ha Public Ports for international and interisland shipment
- Ultimate project 4 jetties with total berthing area 6,200 M
- First stage : 80 Ha reclaim area and Jetty 250 m x 30 m for dry bulk and general cargo, in operation since 2016 with average 1,500,000 ++ DWT/year
- Second stage : extension project of 250 m x 50 m (starting in 2019 with 18 months timeline of completion), will be equipped by Harbour Mobile Crane for Multipurpose Cargo
- Dredging project from current -14 LWS to -16 LWS (in 2022) to cater capsize vessel until 150,000 DWT
- Bonded facilities and custom area
- Liquid storage tank area and cold storage facility
- Coal and dirty bulk terminal with conveyor system
- Container terminal with container yard reclaimed area



Extension of Multipurpose Jetty 250m x 50m in progress

Important Number

JIPE Industrial Estate

Management Office	031-985 409 99
Marketing & Tenant Relations	0813 8800 0168
Utility	0852 3006 9224
Fire Brigade	0853 1234 5900

JIPE Ports Estate

Sales Inquiry	0811 512 253
Operation Officer	0821 4343 4994

Emergency Call

AMBULANCE	118
BASARNAS	115
Natural Disaster Post	129

Local Support

Gresik Regional Office	031-397 5454
Police Station – Manyar Gresik	031-397 4110
BPJS - Gresik Branch	031-397 5277
Tax Center - Gresik Branch	031-395 2693
License Office - East Java Province	031-353 7537
Ibnu Sina Hospital	031-395 1239
Fathma Medika Hospital	031-3943500
PHC Hospital	031-3294801

OUR TENANTS

PT. Unichem Candi Indonesia
(Salt refinery & washing)

PT. Fertilizer Inti Technology
(Fertilizer)

PT. Clariant Adsorbent Indonesia
(Bleaching earth)

PT. Adhimix PCI Indonesia
(Precast and concrete)

PT. Clariant Indonesia
(Speciality chemical)

PT. Tirta Bahagia
(Warehouse)

PT. Cahaya Maju Lestari
(Essential oil and castor oil)

PT. Nippon Indosari Corpindo Tbk
(Bread - Sari Roti)

HOTLINE : +62 813 8800 0168



www.jiipe.com



[jiipe.official](https://www.youtube.com/jiipe.official)



marketing@bkms.jiipe.co.id

HEAD OFFICE

PT. Berkah Kawasan Manyar Sejahtera

Jl. Raya Manyar Km. 11, Manyar-Gresik,
East Java 61151

P : (+62)31 985 409 99

F : (+62)31 985 409 98

REPRESENTATIVE OFFICE

AKR Tower 25th Floor

Jl. Perjuangan No. 5 Kebon Jeruk,
Jakarta Barat 15530

P : (+62)21 5311110

F : (+62)21 5311388

JAPAN OFFICE

JIPE 工業団地 日本事務所:

〒150-0022

東京都恵比寿南1-20-6

第21荒井ビル4階

P : 03 - 6890 - 2578